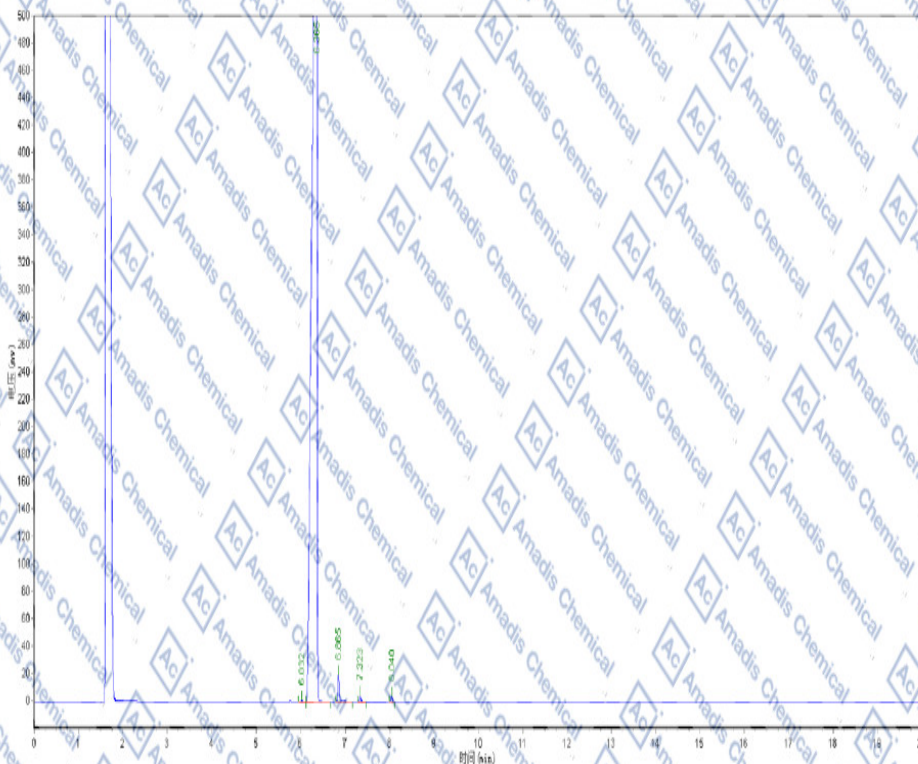


**GC of 1352999-53-1**

**Analytical Instrument:** 2000III

**Analytical Condition:** SE-54 30m×0.32mm×0.5um, Carrier: N<sub>2</sub> 1ml/min, Column Temp: 80°C/2min-15°C/min--260°C/15min, Inj. Temp: 260°C, Det. Temp: 270°C



Peak	Type	Ret Time	Height	Area	Content [%]
1		6.032	338.300	1154.100	0.0218
2		6.365	726604.688	5232833.000	98.7680
3		6.865	19905.834	46051.398	0.8692
4		7.323	3869.818	9405.300	0.1775
5		8.040	3727.533	8663.450	0.1635
					100.0000

\* if you have any comments and suggestions, please contact us by [sales@amadischem.com](mailto:sales@amadischem.com)