

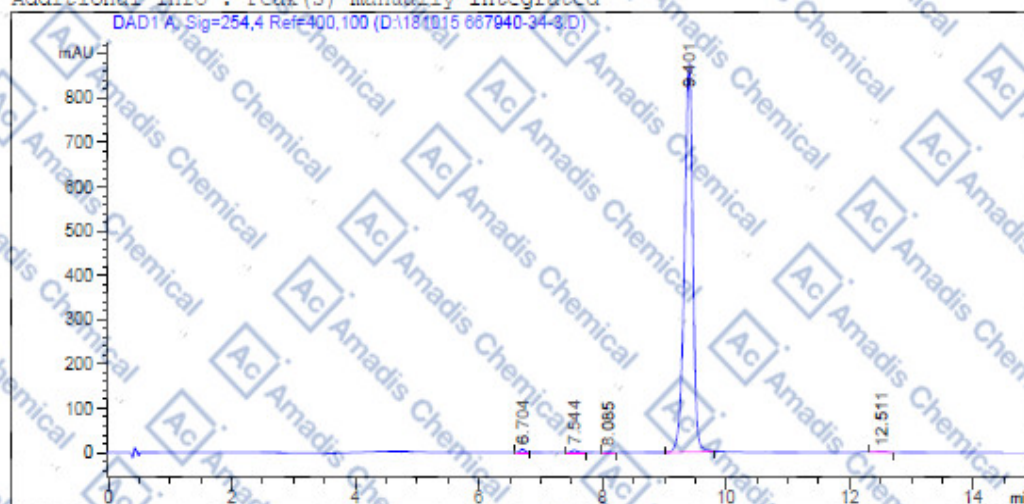
HPLC of 667940-34-3

```

=====
Acq. Operator   :                               Seq. Line :    1
Acq. Instrument : Instrument 1                  Location  : Vial 37
Injection Date  : 10/15/2018 12:39:52 PM      Inj       :    1
                                                Inj Volume: 3.0 µl

Acq. Method    : D:
Last changed   : 10/15/2018 12:49:48 PM
                (modified after loading)
Analysis Method: D:\CHEM32\1\1.M
Last changed   : 10/15/2018 1:05:29 PM
                (modified after loading)
Sample Info    : [A = ACN, B = 0.1% H3PO4/H2O] 30-95% A/B 2 min, 95% A/B 13 min; Athena C18 (3
                µm, 2.1 mm * 100 mm); Flow: 0.45 ml/min, T = 25
=====
  
```

Additional Info : Peak(s) manually integrated



Area Percent Report

```

=====
Sorted By      : Signal
Multiplier     : 1.0000
Dilution       : 1.0000
Use Multiplier & Dilution Factor with ISTDs
  
```

Signal 1: DAD1 A, Sig=254,4 Ref=400,100

Peak #	RetTime [min]	Type	Width [min]	Area [mAU*s]	Height [mAU]	Area %
1	6.704	BV	0.0722	35.79210	7.30267	0.4241
2	7.544	BB	0.0831	32.18036	4.71511	0.3814
3	8.085	BV	0.0779	11.76686	1.82091	0.1394
4	9.401	BB	0.1456	8333.89551	878.78589	98.7558
5	12.511	BV	0.1367	25.25081	2.19573	0.2992

Totals : 8438.89364 894.82031

*** End of Report ***

* If you have any comments and suggestions, please contact us by sales@amadischem.com