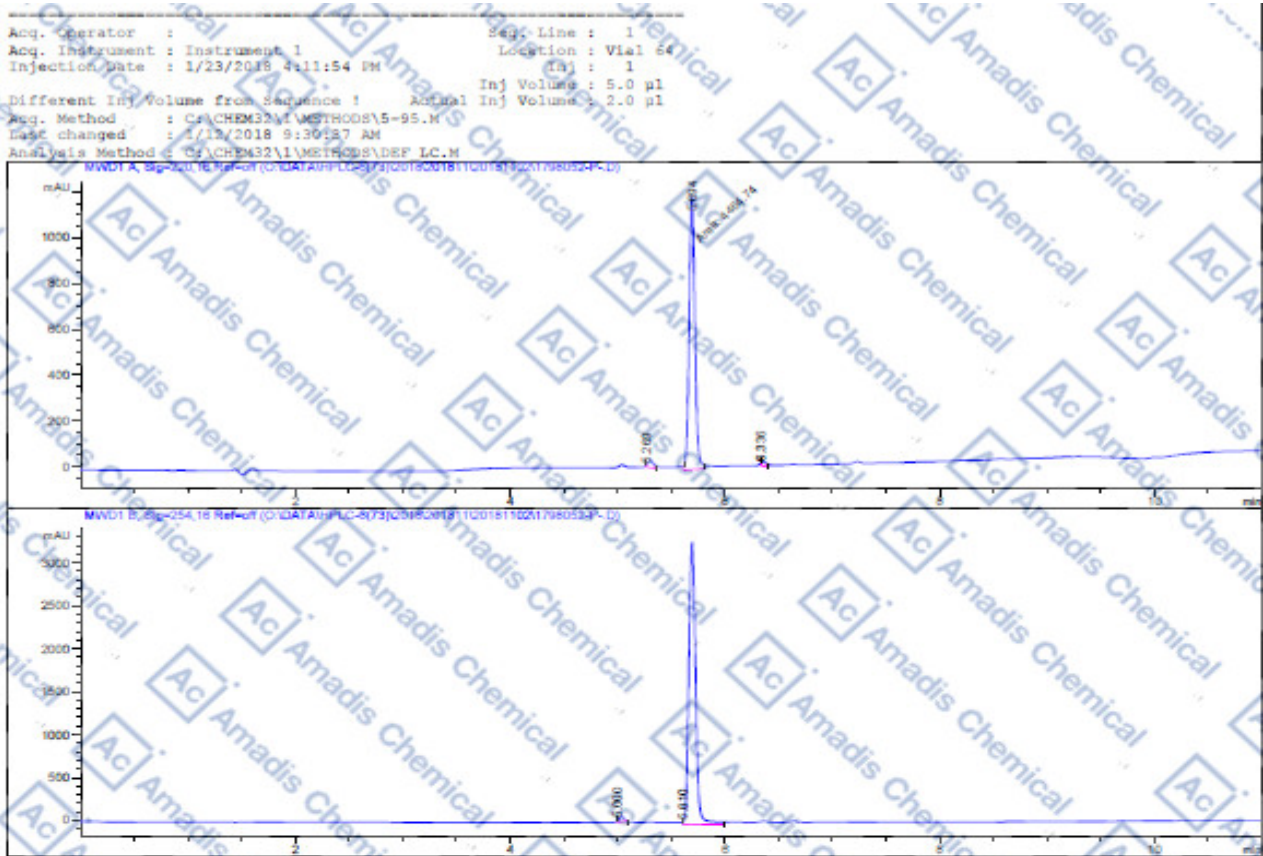


HPLC of 100114-24-7



Area Percent Report

Sorted By : Signal
 Multiplier: : 1.0000
 Dilution: : 1.0000
 Use Multiplier & Dilution Factor With ISTDs

Signal 1: MWD1 A, Sig=220.16 Ref-off

Peak #	RetTime [min]	Type	Width [min]	Area [mAU*s]	Height [mAU]	Area %
1	5.269	MM R	0.0580	111.27081	8.03299	2.4043
2	5.694	MM R	0.0616	4464.74072	1207.28906	96.3932
3	6.356	MM R	0.0458	55.79064	10.34772	1.2045
Totals :				4631.80217	1225.66976	

Signal 2: MWD1 B, Sig=254.16 Ref-off

Peak #	RetTime [min]	Type	Width [min]	Area [mAU*s]	Height [mAU]	Area %
1	5.000	MM R	0.0490	170.74304	13.33025	1.1800
2	5.610	MM R	0.0726	1.4298564	17.52170	98.8200
Totals :				1.44693e4	30.85194	

*** End of Report ***

* If you have any comments and suggestions, please contact us by sales@amadischem.com