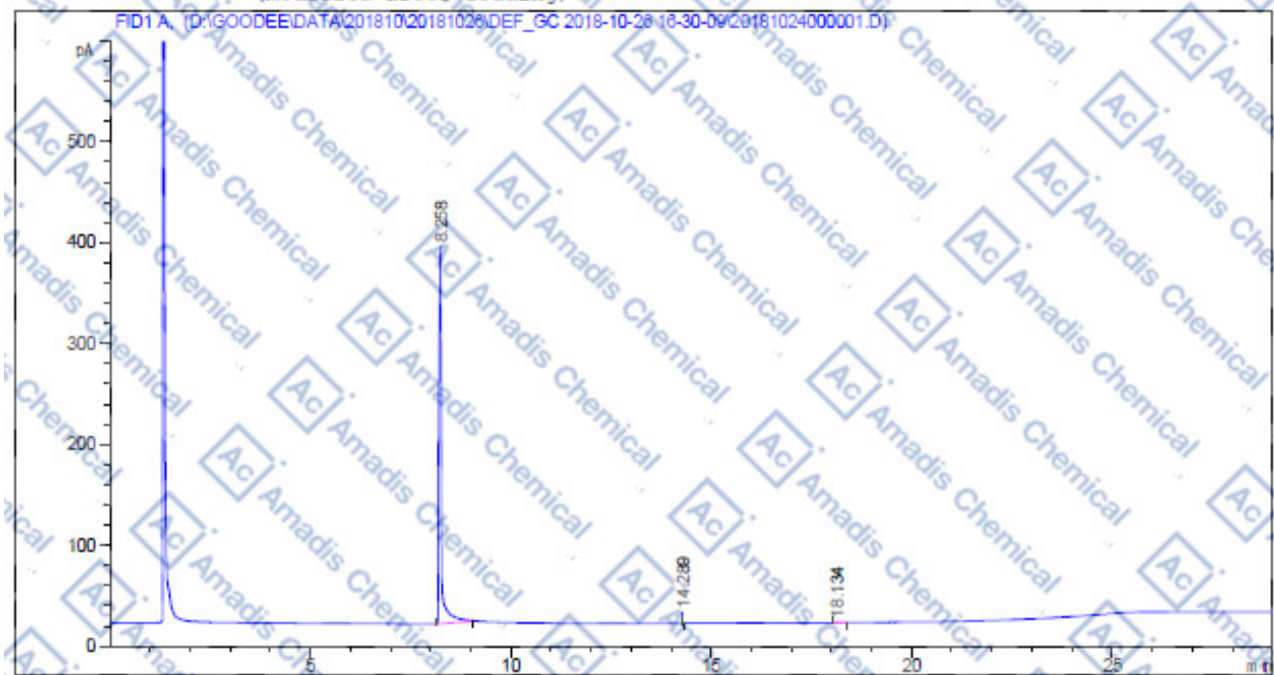


### GC of 130931-83-8

```

Acq. Operator   : XGC                               Seq. Line : 1
Acq. Instrument : Instrument 1                       Location  : Vial 37
Injection Date  : 26-Oct-18, 16:33:07              Inj       : 1
                                                    Inj Volume: 1 µl
Acq. Method     : D:\GOODEE\DATA\201810\20181026\DEF_GC 2018-10-26_16-30-09\GI030.M
Last changed    : 6/6/2018 1:11:38 PM by XGC
Analysis Method : D:\GOODEE\GC METHOD\GI030.M
Last changed    : 11/8/2018 1:01:24 PM by XGC
                (modified after loading)
    
```



-----  
**Area Percent Report**  
 -----

```

Sorted By      : Signal
Multiplier:    : 1.0000
Dilution:      : 1.0000
Use Multiplier & Dilution Factor with ISTDs
    
```

Signal 1: FID1 A

Peak #	RetTime [min]	Type	Width [min]	Area [pA*s]	Height [pA]	Area %
1	1.258	BB	0.0628	1736.04236	372.93582	99.50448
2	14.289	BB	4.01e-3	1.97567	11.48946	0.11324
3	18.134	BB	0.1242	6.66958	6.42015e-1	0.38228
Totals:				1744.68762	385.03729	

\*If you have any comments and suggestions, please contact us by [sales@amadischem.com](mailto:sales@amadischem.com)