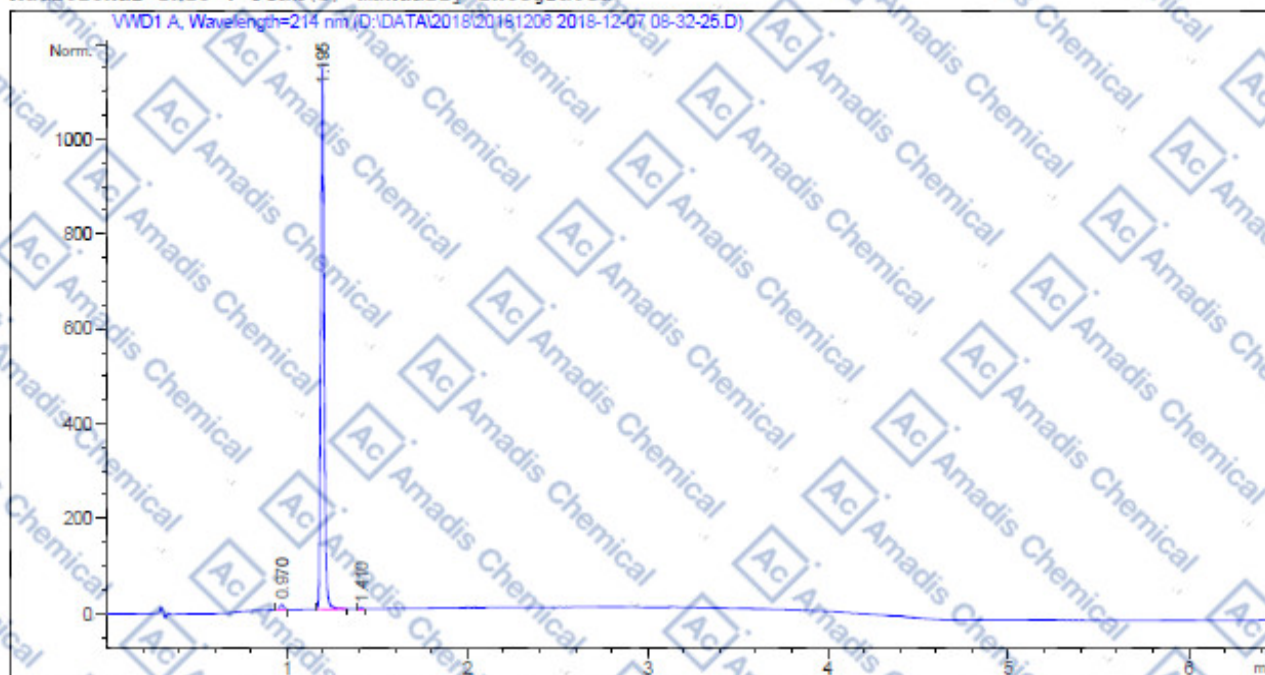


HPLC of 18903-18-9

Additional Info : Peak(s) manually integrated



Area Percent Report

Sorted By : Signal
Multiplier : 1.0000
Dilution : 1.0000
Do not use Multiplier & Dilution Factor with ISTDs

Signal I: WVD1 A, Wavelength=214 nm

Peak #	RetTime [min]	Type	Width [min]	Area [mAU*s]	Height [mAU]	Area %
1	0.970	MM	0.0226	16.93480	12.51554	1.1363
2	1.195	MM	0.0215	1473.97620	1141.66931	98.6401
3	1.410	MM	0.0199	3.38547	2.97777	0.2266
Totals				1494.29646	1157.16262	

*If you have any comments and suggestions, please contact us by sales@amadischem.com