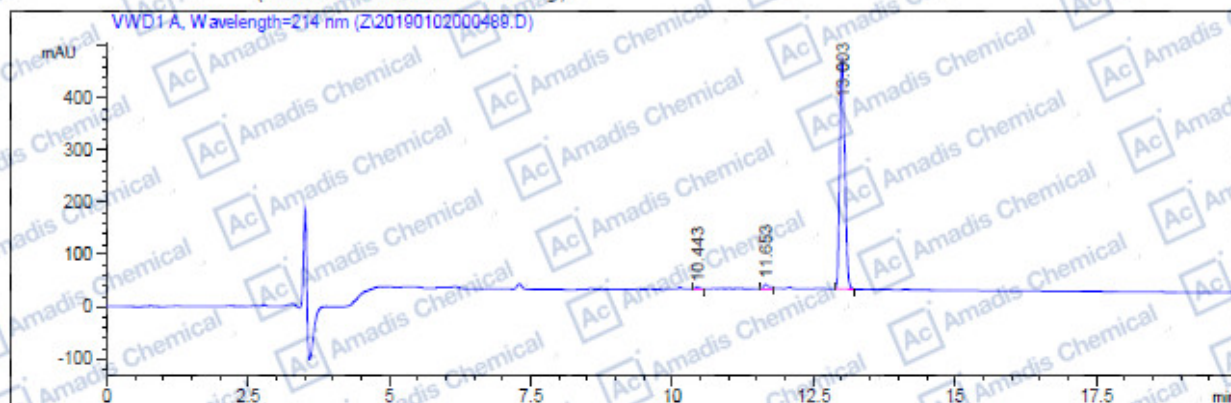


### HPLC of 108102-51-8

```

=====
Acq. Operator   : Z
Acq. Instrument : instr1
Location       : Vial 11
Injection Date  : 11/03/2019 16:10:54
Acq. Method    : C:\CHEM32\1\METHODS\DEF_LC.M
Last changed   : 11/03/2019 16:14:16 by Z
                (modified after loading)
Analysis Method : C:\CHEM32\1\METHODS\DEF_LC.M
Last changed   : 11/03/2019 16:31:32 by YZR
                (modified after loading)
=====
    
```



#### Area Percent Report

```

=====
Sorted By      : Signal
Multiplier    : 1.0000
Dilution       : 1.0000
Use Multiplier & Dilution Factor with ISTDs
    
```

Signal 1: VWD1 A, Wavelength=214 nm

Peak #	RetTime [min]	Type	Width [min]	Area mAU	Area %	Height [mAU]
1	10.443	BB	0.0721	15.30985	0.5376	3.26869
2	11.653	BB	0.0980	56.05271	1.9683	8.27063
3	13.003	BB	0.0991	2776.47412	97.4941	444.24194
Totals				2847.83669		455.78126

\*\*\* End of Report \*\*\*

\* If you have any comments and suggestions, please contact us by [sales@amadischem.com](mailto:sales@amadischem.com)