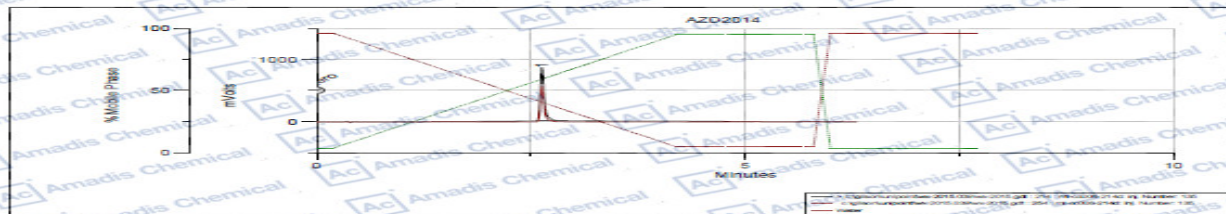


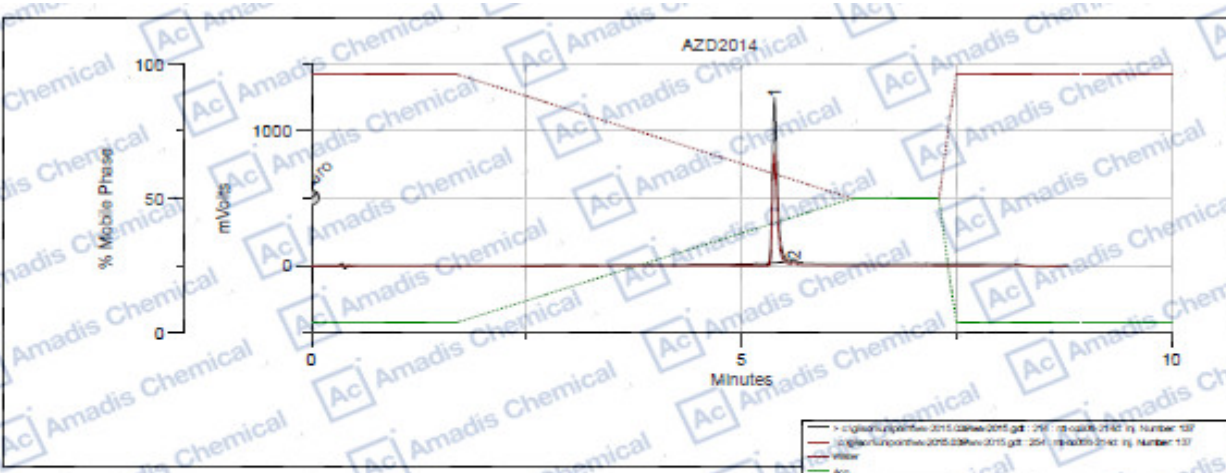
HPLC of 1009298-59-2

Data File: c:\gilson\unipoint\wx-2015-039\wx-2015.gdt
 Date acquired: Fri Oct 23 2015 15:39:39
 Control Method: C:\GILSON\UNIPPOINT\SYS\MAN.GCT
 Analysis Method: C:\GILSON\UNIPPOINT\SYS\MAN.GAN
 Sample name: mt-cc0006-214d Sample site: Sample:00 Injection Number: 135 *Unknown*
 Channel Scales: 214 0.00 to 10.00 mVolt (0 %offset), Data rate: 20.00 (points/second) <Auto zero> <Analysis Channel>
 <Auto range Analysis Channel>
 254 0.00 to 10.00 mVolt (5 %offset), Data rate: 20.00 (points/second) <Auto zero>
 Peak Table
 <None>
 Peak Detection Parameters
 Relative Error: 5 (%) Absolute Error: 0.1 (min)



Inj. Number	Peak Name	Sample Descrip.	R. Time	Sample Location	Height	Area	Area %	
1	135.00	1	AZD2014	2.63	Sample:60	852.69	4563482.00	100.00

Data File: c:\gilson\unipoint\wx-2015-039\wx-2015.gdt
 Date acquired: Fri Oct 23 2015 15:57:04
 Control Method: C:\GILSON\UNIPPOINT\SYS\MAN.GCT
 Analysis Method: C:\GILSON\UNIPPOINT\SYS\MAN.GAN
 Sample name: mt-cc0006-214d Sample site: Sample:00 Injection Number: 137 *Unknown*
 Channel Scales: 214 0.00 to 10.00 mVolt (0 %offset), Data rate: 20.00 (points/second) <Auto zero> <Analysis Channel>
 <Auto range Analysis Channel>
 254 0.00 to 10.00 mVolt (5 %offset), Data rate: 20.00 (points/second) <Auto zero>
 Peak Table
 <None>
 Peak Detection Parameters
 Relative Error: 5 (%) Absolute Error: 0.1 (min)



Inj. Number	Peak Name	Sample Descrip.	R. Time	Sample Location	Height	Area	Area %	
1	137.00	1	AZD2014	5.38	Sample:60	1233.79	8207399.00	98.86
2	137.00	2	AZD2014	5.62	Sample:60	19.56	94772.58	1.14

* If you have any comments and suggestions, please contact us by sales@amadischem.com