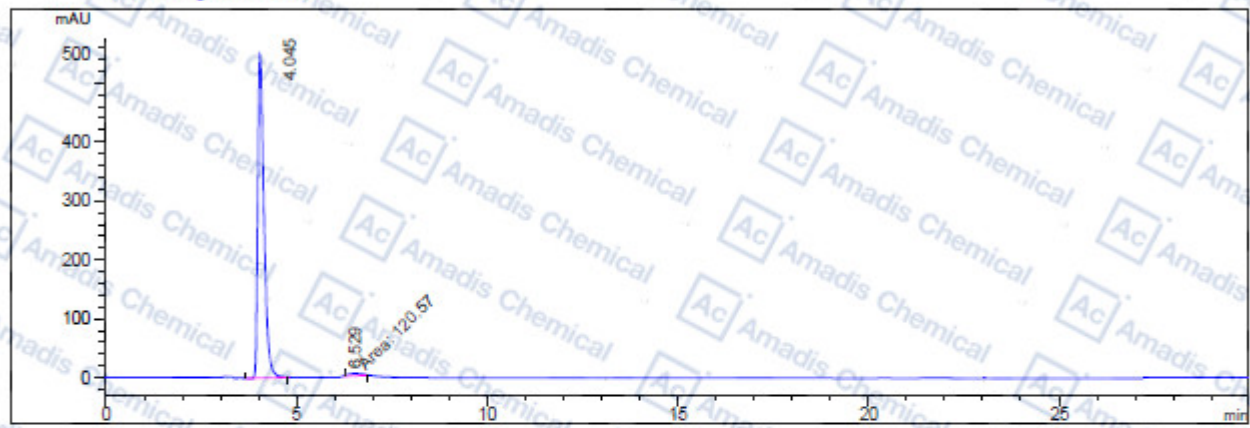


### HPLC of 1401090-53-6

```

=====
Acq. Operator   :                               Seq. Line : 1
Acq. Instrument : Instrument 1                   Location  : AL
Injection Date  : 5/28/2019                     Inj Volume : 5.0 µl
                                                Actual Inj Volume : 8.0 µl
Different Inj Volume from Sequence !
Last changed   : 2/15/2019
Analysis Method : E:\METHODS
Last changed   : 5/28/2019
Additional Info : Peak(s) manually integrated
DAD1 B, Sig=254,4 Ref=off
    
```



Area Percent Report

```

Sorted By      : Signal
Multiplier     : 1.0000
Dilution      : 1.0000
Use Multiplier & Dilution Factor with ISTDs
    
```

Signal 1: DAD1 B, Sig=254,4 Ref=off

Peak #	RetTime [min]	Type	Width [min]	Area [mAU*s]	Height [mAU]	Area %
1	4.045	VB	0.1610	6082.68945	550.10938	98.0563
2	6.529	FM	0.4439	120.57015	4.52743	1.9437
Totals :				6203.25961	554.63681	

\*\*\* End of Report \*\*\*

\* If you have any comments and suggestions, please contact us by [sales@amadischem.com](mailto:sales@amadischem.com)