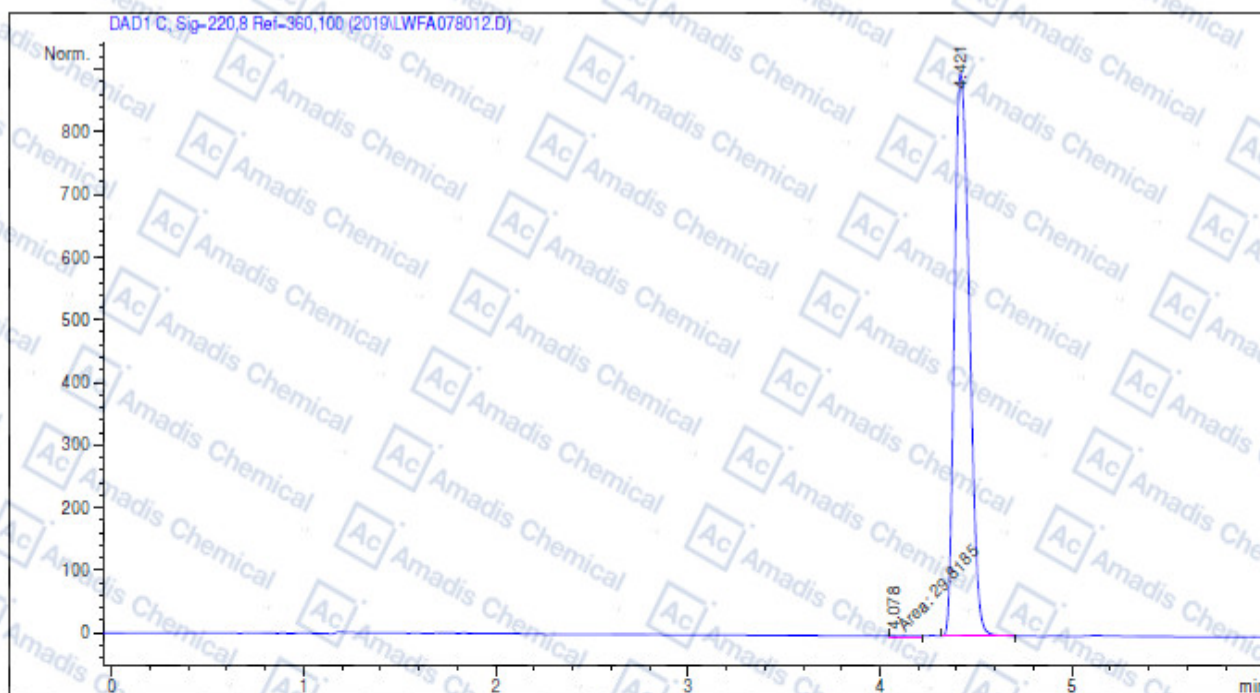


### HPLC of 937400-05-0



-----  
**Area Percent Report**  
 -----

Sorted By : Signal  
 Multiplier : 1.0000  
 Dilution : 1.0000  
 Use Multiplier & Dilution Factor with ISTDs

Signal 1: DAD1 C, Sig-220,8 Ref-360,100

Peak #	RetTime [min]	Type	Width [min]	Area [mAU*s]	Height [mAU]	Area %
1	4.078	MM	0.1747	29.81853	2.84545	0.6080
2	4.421	VB	0.0891	4874.79834	900.76398	99.3920
Totals :				4904.61687	903.60943	

-----  
 \*\*\* End of Report \*\*\*  
 -----

\* If you have any comments and suggestions, please contact us by [sales@amadischem.com](mailto:sales@amadischem.com)