

HPLC of 249296-44-4

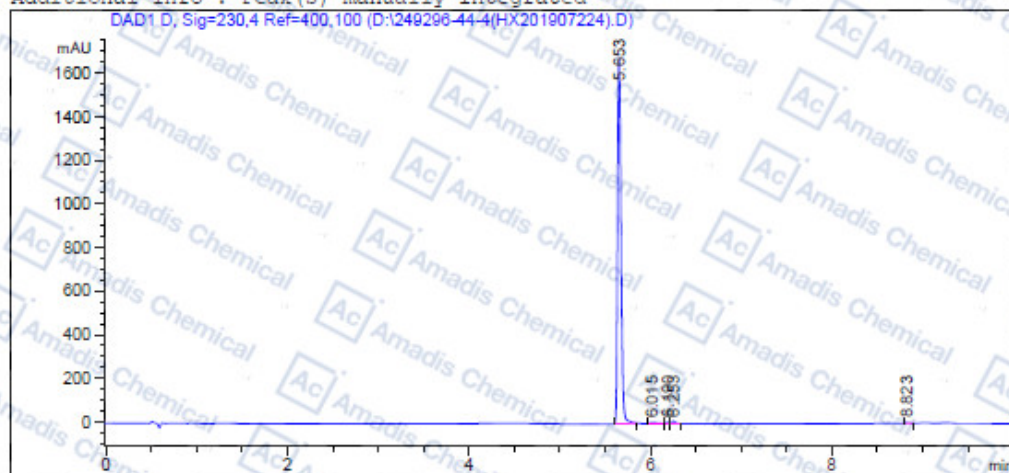
```

=====
Acq. Operator   :                               Seq. Line :    4
Acq. Instrument : Instrument 1                  Location  : Vial 37
Injection Date  : 7/22/2019 3:33:42 PM        Inj       :    1
                                                    Inj Volume: 3.0 µl

Acq. Method     : D:
Last changed    : 6/6/2018 1:07:35 PM
Analysis Method : D:\CHEM32\1\1.M
Last changed    : 7/22/2019 4:07:03 PM
                : (modified after loading)

Sample Info     : [A = ACN, B = acid+1/H2O] 0% A/B 2 min, 0-95% A/B 5 min, 95% A/B 3 min; Athena
                : C18 (3 µm, 2.1 mm * 100 mm); Flow: 0.45 ml/min, T = 25
=====
  
```

Additional Info : Peak(s) manually integrated



=====
 Area Percent Report
 =====

```

Sorted By      : Signal
Multiplier     : 1.0000
Dilution       : 1.0000
Use Multiplier & Dilution Factor with ISTDs
  
```

Signal 1: DAD1 D, Sig=230,4 Ref=400,100

Peak #	RetTime [min]	Type	Width [min]	Area [mAU*s]	Height [mAU]	Area %
1	5.653	BB	0.0426	4558.01318	1680.41650	98.3724
2	6.015	BB	0.0761	20.66595	3.61841	0.4460
3	6.190	BV	0.0432	17.55692	6.46928	0.3789
4	6.253	VB	0.0404	32.16629	11.78075	0.6942
5	8.823	BB	0.0411	5.02282	1.91491	0.1084

Totals : 4633.42517 1704.19985

=====
 *** End of Report ***
 =====

* if you have any comments and suggestions, please contact us by sales@amadischem.com