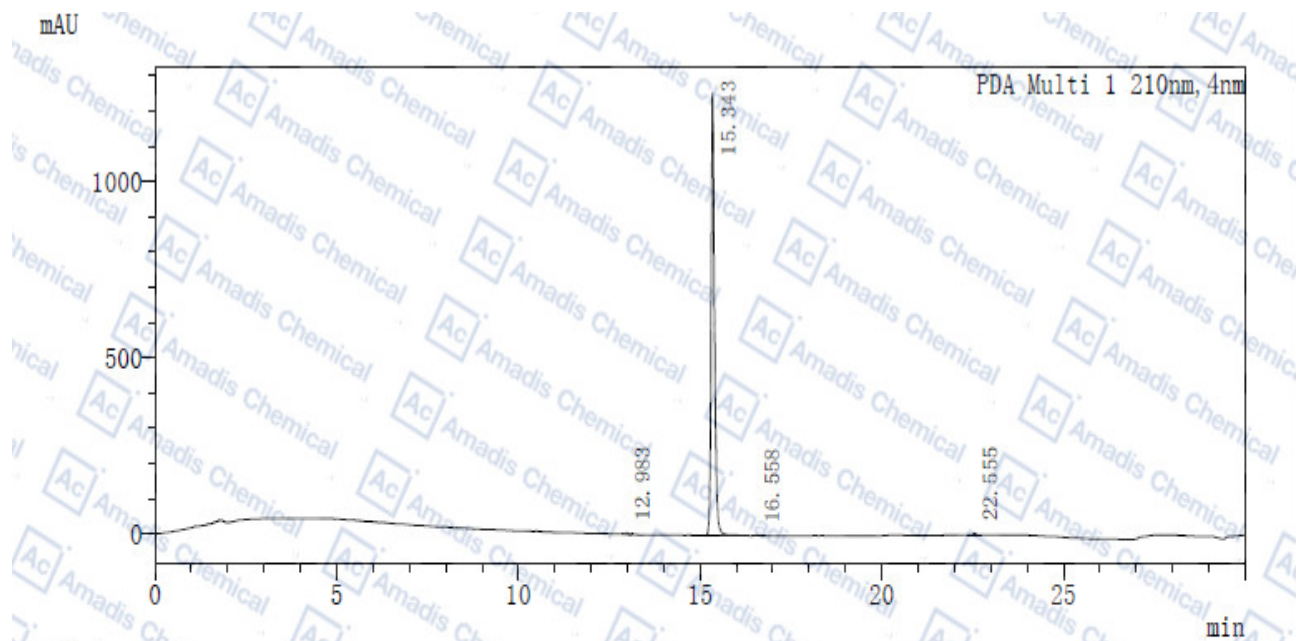


HPLC of 1207293-36-4



峰表

PDA Ch1 210nm

峰号	保留时间	面积	高度	面积%	分离度(USP)
1	12.983	21542	4358	0.261	-
2	15.343	8206704	1257611	99.292	14.090
3	16.558	11796	1486	0.143	6.052
4	22.555	25170	4218	0.305	30.702
总计		8265212	1267673	100.000	

*if you have any comments and suggestions, please contact us by sales@amadischem.com