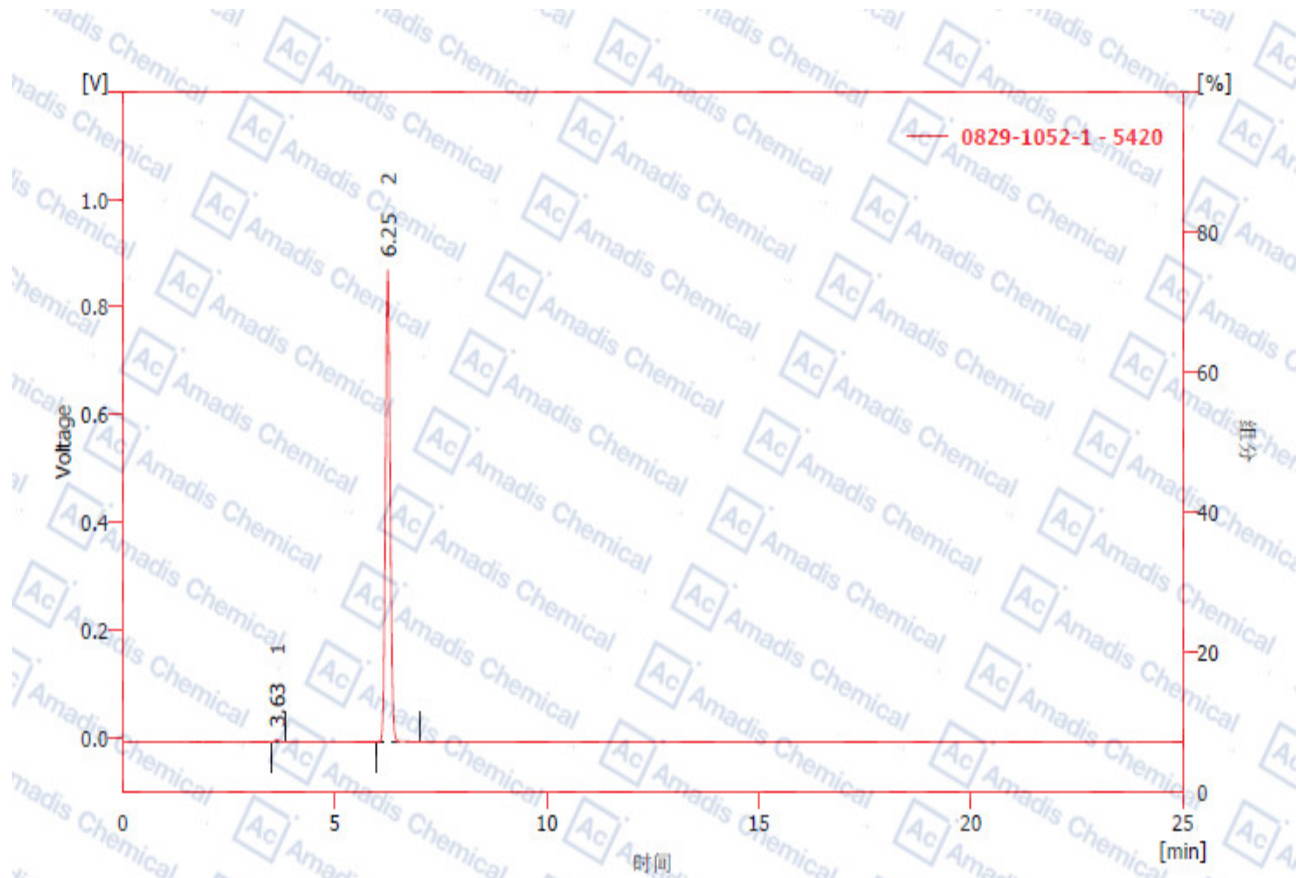


HPLC of 4792-29-4



结果表(不计算 - 0829-1052-1 - 5420)

	保留时间 [min]	峰面积 [mV.s]	峰高 [mV]	面积 [%]	柱效 [th. pl]	分离度 [-]	对称/拖尾因子 [-]
1	3.627	22.509	3.971	0.33	8996		1.188
2	6.245	6823.993	875.581	99.67	14204	14.483	1.107
	合计	6846.502	879.551	100.00			

*if you have any comments and suggestions, please contact us by sales@amadischem.com