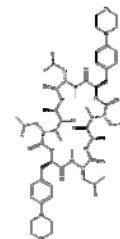


Certificate Of Analysis

Name: Emodepside
CAS No.: 155030-63-0
Cat No.: A929940
Molecular Formula: C₆₀H₉₀N₆O₁₄
Molecular Weight: 1119.39
Batch No.: E02112019
Mfg.Date: 2019.11.02
Exp.Date: 2021.11.01



Items	Specifications	Results
Appearance	White powder	Conforms
Specific rotation	-93°~-103°	-96°
Identification (IR)	The IR spectrum of the sample corresponds to the Spectrum of reference standard.	Conforms
Water	≤5.0%	1.81%
Heavy metal	≤20ppm	<20ppm
Residue on ignition	≤0.1%	0.04%
Relative substances	Individual impurity≤0.2%	0.08%
	Total impurities≤3.0%	0.36%
Residue solvent	Methanol≤0.3%	0.02%
	Ethanol≤0.5%	0.07%
	Acetone≤0.5%	0.001%
	Dichloromethane≤0.06%	0.004%
	Isopropyl ether≤0.5%	0.07%
	Ethyl acetate≤0.5%	0.001%
	N-heptane≤0.5%	Not detected
purity	98%(min)	Conforms
Conclusion	The product tested complies with the specifications.	

Storage condition: Store in a tightly closed container in a cool and dry place.

Checker:

*If you have any comments and suggestions, please contact us by sales@amadischem.com

*For R&D use only