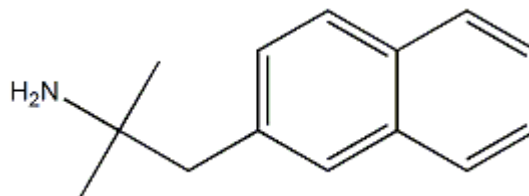


Certificate Of Analysis

Name: 2-Methyl-1-(naphthalen-2-yl)propan-2-amine
CAS No.: 198226-63-0
Cat No.: A18402
Molecular Formula: C₁₄H₁₇N
Molecular Weight: 199.3
Batch No.: M04032021
Mfg.Date: 2021.03.04
Exp.Date: 2023.03.03



Items	Specifications	Results
Appearance	Light yellow powder	Conforms
Purity	95%(min)	Conforms
Conclusion	The product tested complies with the specifications.	

Storage condition: Store in a tightly closed container in a cool and dry place.

Checker:

*If you have any comments and suggestions, please contact us by sales@amadischem.com

*For R&D use only