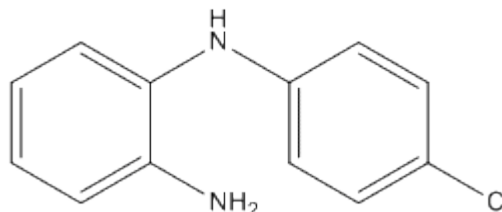


## Certificate Of Analysis

**Name:** N-(4-Chlorophenyl)-1,2-phenylenediamine  
**CAS No.:** 68817-71-0  
**Cat No.:** A836256  
**Molecular Formula:** C12H11ClN2  
**Molecular Weight:** 218.68  
**Batch No.:** N11012021  
**Mfg.Date:** 2021.01.11  
**Exp.Date:** 2023.01.10



Items	Specifications	Results
Appearance	Gray crystalline powder	Conforms
Purity (HPLC)	98%(min)	99.91%
Solubility	Methanol,dichloromethane,acetone,insoluble in water,dil,Hydrochloric acid	Conforms
Melting range	115°C to 117°C	115°C to 116°C
Identification (TLC)	Principle spot in the chromatogram obtained by test solution corresponds in Rf value to that of reference substance	Conforms
Single impurity	≤0.2%	0.03%
Loss on drying	≤0.5%	0.27%
Sulphated Ash	≤0.3%	Conforms
Conclusion	The product tested complies with the specifications.	

**Storage condition:** Store in a tightly closed container in a cool and dry place.

Checker:

-----  
 \*If you have any comments and suggestions, please contact us by [sales@amadischem.com](mailto:sales@amadischem.com)

\*For R&D use only