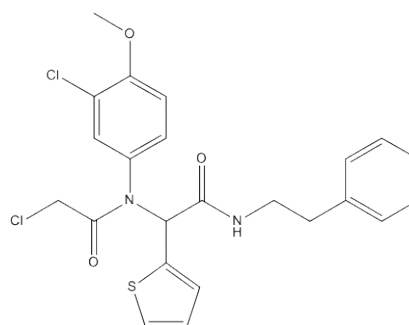


## Certificate Of Analysis

**Name:** ML162  
**CAS No.:** 1035072-16-2  
**Cat No.:** A942143  
**Molecular Formula:** C<sub>23</sub>H<sub>22</sub>Cl<sub>2</sub>N<sub>2</sub>O<sub>3</sub>S  
**Molecular Weight:** 477.40  
**Batch No.:** M17062022  
**Mfg.Date:** 2022.06.17  
**Exp.Date:** 2024.06.16



Items	Specifications	Results
Appearance	Off-white powder	Conforms
Purity	98%(min)	Conforms
Conclusion	The product tested complies with the specifications.	

**Storage condition: Store in a tightly closed container in a cool and dry place.**

Checker:

\*If you have any comments and suggestions, please contact us by [sales@amadischem.com](mailto:sales@amadischem.com)

\*For laboratory or manufacturing use only, not for drug, food and household use.