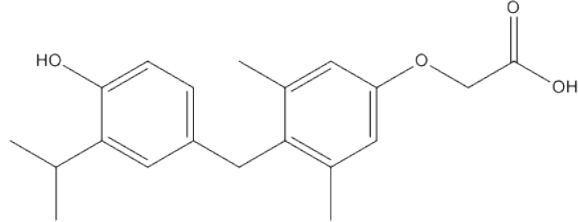


Certificate Of Analysis

Name: Sobetirome
CAS No.: 211110-63-3
Cat No.: A905652
Molecular Formula: C₂₀H₂₄O₄
Molecular Weight: 328.40
Batch No.: S10072023
Mfg.Date: 2023.07.10
Exp.Date: 2025.07.09



Items	Specifications	Results
Appearance	Yellow powder	Conforms
Purity	98%(min)	Conforms
Conclusion	The product tested complies with the specifications.	

Storage condition: Store in a tightly closed container in a cool and dry place.

Checker:

*If you have any comments and suggestions, please contact us by sales@amadischem.com

*For laboratory or manufacturing use only, not for drug, food and household use.