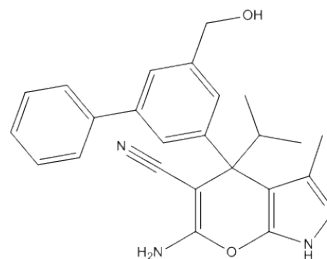


Certificate Of Analysis

Name: SHIN1
CAS No.: 2146095-85-2
Cat No.: A942772
Molecular Formula: C₂₄H₂₄N₄O₂
Molecular Weight: 400.48
Batch No.: S20122023
Mfg.Date: 2023.12.20
Exp.Date: 2025.12.19



Items	Specifications	Results
Appearance	White powder	Conforms
Purity	98%(min)	Conforms
Conclusion	The product tested complies with the specifications.	

Storage condition: Store in a tightly closed container in a cool and dry place.

Checker:

*If you have any comments and suggestions, please contact us by sales@amadischem.com

*For laboratory or manufacturing use only, not for drug, food and household use.