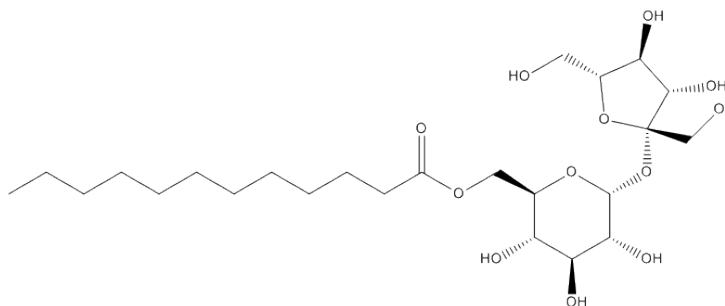


Certificate Of Analysis

Name: Sucrose monolaurate
CAS No.: 25339-99-5
Cat No.: A877619
Molecular Formula: C₂₄H₄₄O₁₂
Molecular Weight: 524.60
Batch No.: S16122023
Mfg.Date: 2023.12.16
Exp.Date: 2025.12.15



Items	Specifications	Results
Appearance	White powder	Conforms
Purity	95%(min)	Conforms
Conclusion	The product tested complies with the specifications.	

Storage condition: Store in a tightly closed container in a cool and dry place.

Checker:

*If you have any comments and suggestions, please contact us by sales@amadischem.com

*For laboratory or manufacturing use only, not for drug, food and household use.