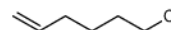


Certificate Of Analysis

Name: 6-Chlorohex-1-ene
CAS NO.: 928-89-2
Cat NO.: A844376
Batch No.: C08122016
Mfg.Date: 2016.12.08
Exp.Date: 2018.12.07



| Items | Specifications | Results |
|------------|--|----------|
| Appearance | Colorless transparent or light yellow liquid | Conforms |
| Purity | $\geq 97\%$ (GC) | 97.4% |
| Conclusion | The product tested complies with the specifications. | |

Storage condition: Store in a tightly closed container in a cool and dry place.

Checker:

** If you have any comments and suggestions, please contact us by sales@amadischem.com*