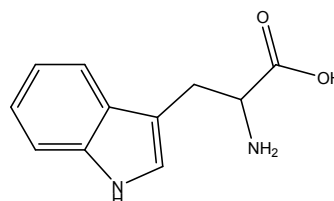


## Certificate Of Analysis

**Name:** DL-Tryptophan  
**CAS NO.:** 54-12-6  
**Cat NO.:** A829974  
**Batch No.:** D03022015  
**Mfg.Date:** 2015-02-03  
**Exp.Date:** 2017-02-02



Items	Specifications	Results
<b>Appearance</b>	White to yellowish white crystals or crystalline powder	Conforms
<b>Chloride(Cl)</b>	≤0.10%	<0.10%
<b>Ammonium(NH4)</b>	≤0.02%	<0.02%
<b>Sulfate(SO4)</b>	≤0.030%	<0.030%
<b>Iron(Fe)</b>	≤30ppm	<30ppm
<b>Heavy metals(Pb)</b>	≤10ppm	<10ppm
<b>Arsenic(As2O3)</b>	≤1ppm	<1ppm
<b>Other Amino acids</b>	Chromatographically not detectable	Conforms
<b>Loss on drying</b>	≤0.50%	0.21%
<b>Residue on ignition</b>	≤0.20%	0.04%
<b>Purity</b>	98.0~101.0%	99.30%
<b>PH</b>	5.5~7.0	6.1
<b>Conclusion</b>	The product tested complies with the specifications	

**Storage condition: Store in a tightly closed container in a cool and dry place.**

Checker:

*\* if you have any comments and suggestions, please contact us by [sales@amadischem.com](mailto:sales@amadischem.com)*