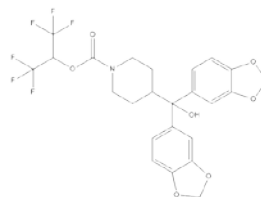


## Certificate Of Analysis

**Name:** KML-29  
**CAS No.:** 1380424-42-9  
**Cat No.:** A902108  
**Batch No.:** K24102017  
**Mfg.Date:** 2017.10.24  
**Exp.Date:** 2019.10.23



Items	Specifications	Results
Appearance	White powder	Conforms
Purity	98%(min)	Conforms
Conclusion	The product tested complies with the specifications.	

**Storage condition: Store in a tightly closed container in a cool and dry place.**

Checker:

-----  
*\* If you have any comments and suggestions, please contact us by [sales@amadischem.com](mailto:sales@amadischem.com)*