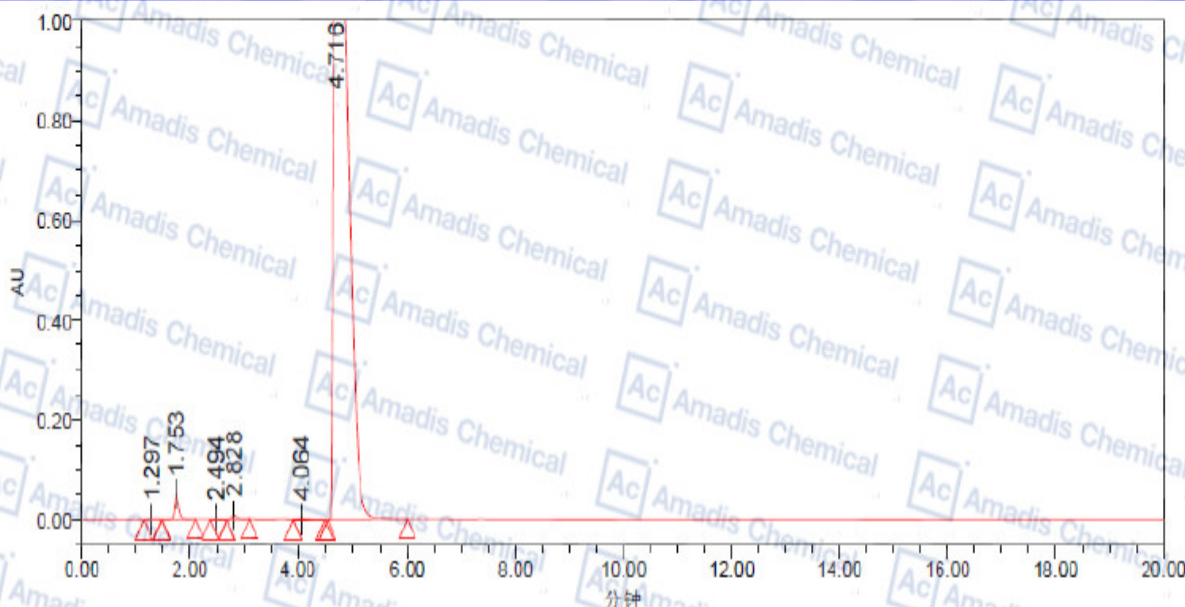


HPLC of 1000568-54-6

Analytical Instrument: HPLC (Waters 2695)

Analytical Condition: ZORBAX Eclipse XDB-C18 5µm 4.6×150mm, Mobile Phase: CH₃CN / H₂O(0.1%Trifluoroacetic acid)=50:50].Detection Wave Length: 254nm, Flow:1.0ml/min



Peak	Type	Ret Time	Height	Area	Content [%]
------	------	----------	--------	------	-------------

处理通道: W2996 PDA 254.0 纳米 (于 1.2)

	处理通道	保留时间 (分钟)	面积	% 面积	峰高
1	W2996 PDA 254.0 纳米 (于 1.2)	1.297	12219	0.04	1115
2	W2996 PDA 254.0 纳米 (于 1.2)	1.753	326387	1.12	50865
3	W2996 PDA 254.0 纳米 (于 1.2)	2.494	7221	0.02	1039
4	W2996 PDA 254.0 纳米 (于 1.2)	2.828	68851	0.24	10298
5	W2996 PDA 254.0 纳米 (于 1.2)	4.064	13672	0.05	1348
6	W2996 PDA 254.0 纳米 (于 1.2)	4.716	28596318	98.52	1732592

* if you have any comments and suggestions, please contact us by sales@amadischem.com